



COMPUCARE INDIA PRIVATE LIMITED

CONNECTING INDUSTRY TO THE INDUSTRIAL 4.0.

About Us

- Established in 1996 (26 Years)
- Partner in journey - 'Industry 4.0'
- Provide Industrial-IOT based Automation Solutions
- Proven ROI(Return On Investment)
- Provide advance solutions to improve productivity & efficiency of client.

Our Office

- CompuCare India Private Limited
- 203-210, Bombay Shopping Centre, R.C. Dutt Road, Racecourse, Vadodara Gujarat 390007

100 + Channel Partners All Over India

Our Strength



- Products & Quality
- Proven Products with Quality Service delivery



- Proven Track Record. Quick & on-time Delivery



- Product Customizable



- Software
- In house Software Development Team



- Industry 4.0
- Indigenously developed IIoT Device with Wide Network For Execution
- Own products manufacturer with Customized Solution

Our Solutions

We develop customized IIOT based Industrial Automation products, Industrial Displays and Employee Management

Industrial Display Boards.

- EHS Display (Environment, Health, Safety)
- ERT Display (Emergency Response Team)
- Safety Statics Display Application
- Production Data Display
- Digital Clock



Employee Management

- Tempus Central



Industrial Automation products

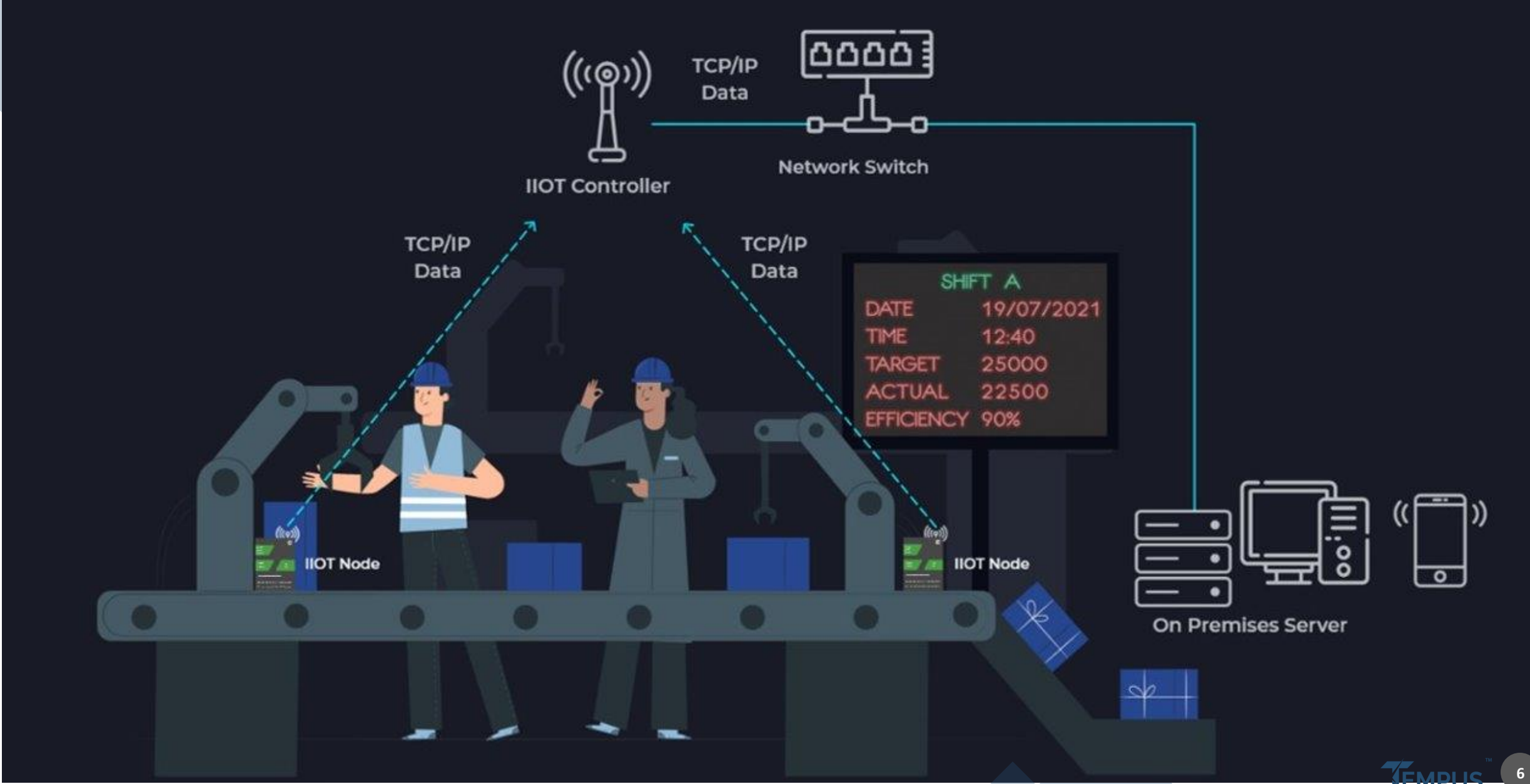
- Wireless Production Monitoring System
- Wireless ANDON System
- Wireless Utility Monitoring System
- Preventive Maintenance Management
- Head Count Solution
- Poka-Yoke System (Mistak proof System)
- Pick To Light (used in warehouse)
- Work Instruction Digitization
- Tact Time Solution(Andon System)
- RFID Based Assets Management



Wireless Production Monitoring System



Technical working diagram of PMS





Innovative People • Innovative Solutions



Maximize Manufacturing Productivity with *Simplify OEE* Your Key to Improved Efficiency!



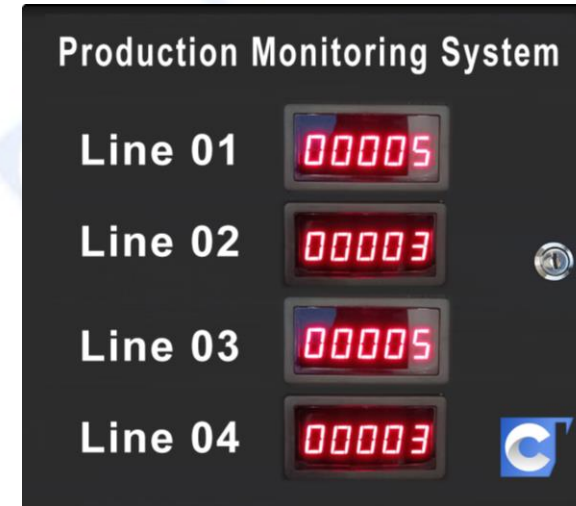
Hardware used in PMS



Wireless PMS

Model No:- PMS-WIFI-CC201

No. Of Input	02
CPU	32 bit
Data Accuracy	100%
Wireless Range (In Radius)	Up to 300 Meter
Communication	RF



Wired PMS

Model No:- PMS-W-CC204

No. Of Input	04
CPU	32 bit
Data Accuracy	100%
Communication	Ethernet / Wi-Fi

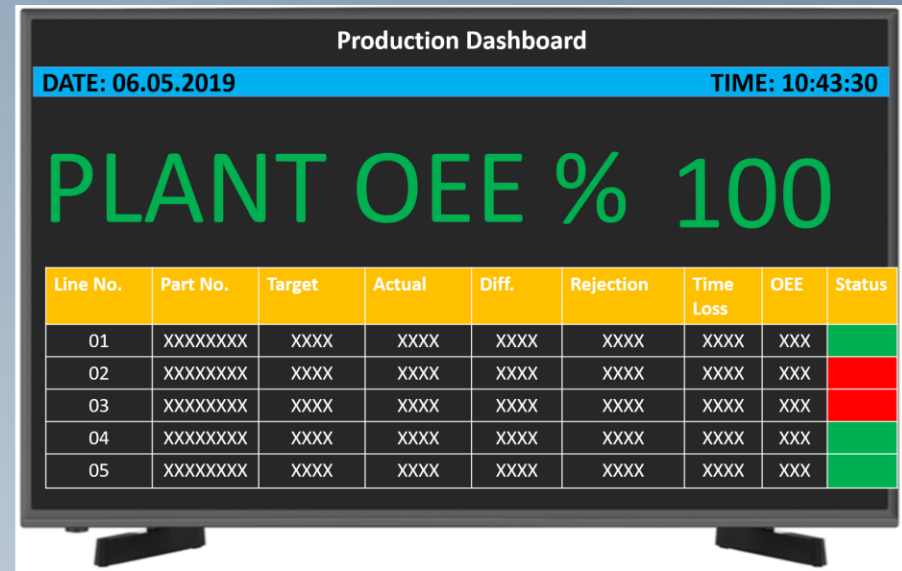
Wireless Production Monitoring System



Add-On Visual Notification Hardware



**Industrial
LED Display Board**



**Industrial
Smart LED TV**

Effy's Dashboard

Machine Setup

<input type="checkbox"/> Production	11	▼
<input type="checkbox"/> Rejection	12	▼
Asset Setup Time	10	Minute ▼
Cycle Time	40	Second ▼

Shift A
Shift B

Assign Machine Operator
Jim ▼

Save

Cancel

DTown
LTE 5:37

Dashboard

Line 1 - Product Name

328
Actual Production

67% ▼
Efficiency

Online

500
Target Production

72% ▲
OEE %

Line 2 - Product Name

225
Actual Production

60% ▼
Efficiency

Stopped

500
Target Production

52% ▼
OEE %

Line 3 - Product Name

50
Actual Production

0% ▼
Efficiency

Offline

500
Target Production

0% ▼
OEE %

Line 1 - Product Name

328

500

Andon Alerts

Dashboard

More

Efficiency



Production Loss

2394 Pcs

OEE



Production Line - Target Vs Actual



FusionCharts Trial

Total Production - Product



FusionCharts Trial

REAR ASSY

Stoped

63%

Efficiency %



221

Production Loss

FRONT ASSY

Disable

67%

Efficiency %



195

Production Loss

HANDLER

Disable

5%

Efficiency %



570

Production Loss

**Smart
Dashboard**

**Automated
reports and
alerts**

**Location
versatility**

**Machine and
product setup**

Features & Benefits

Wi-Fi Andon System

QUALITY

MAINTENANCE

STORE

KNOWLEDGE

CLEAR

CompuCare

Model No. AMV 05

Wireless Andon System

Technical working diagram of Andon system





Wireless ANDON Station

Model No:- AS-TL-CC501

No. Of Problems Input	05
CPU	32 bit
Data Accuracy	100%
Wireless Range (In Radius)	Up to 300 Meter
Communication	RF



Wireless ANDON Station

Model No:- AS-CC201

No. Of Problems Input	04
CPU	32 bit
Data Accuracy	100%
Wireless Range (In Radius)	Up to 300 Meter
Communication	RF



Wireless ANDON Station

Model No:- AS-CC501

No. Of Problems Input	05
CPU	32 bit
Data Accuracy	100%
Wireless Range (In Radius)	Up to 300 Meter
Communication	RF

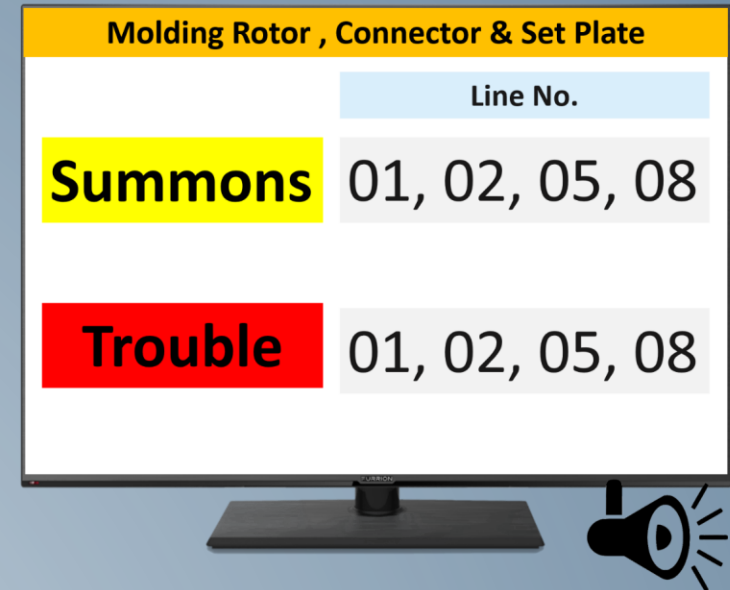
Notification Hardware of Andon System



Industrial Tower Light



Industrial LED Display Board



Industrial Smart LED TV

**Smart Andon
Stations**

**Escalation and
Remark**

**Data and
Statistics**

**Setup Problem
Group**

Features & Benefits

Effy's Dashboard

Meter Setup

Meter Type Electric ▾

Register Number 12345ABCDE

Minimum Consumption 10 kwph

Maximum Consumption 40 kwph

Connect to machine Mach ▾

Save
Cancel

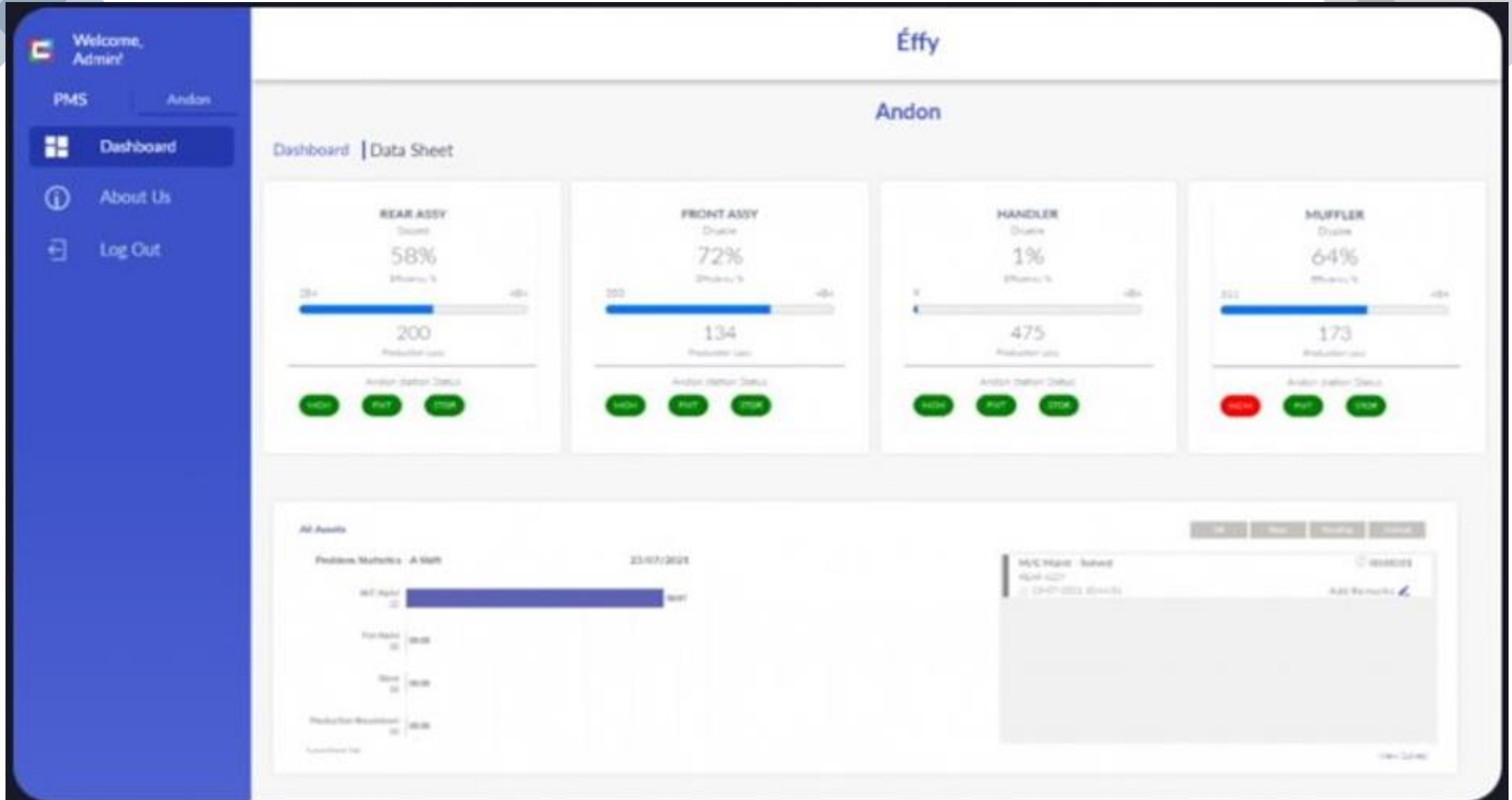
←
Andon Alerts 🔔

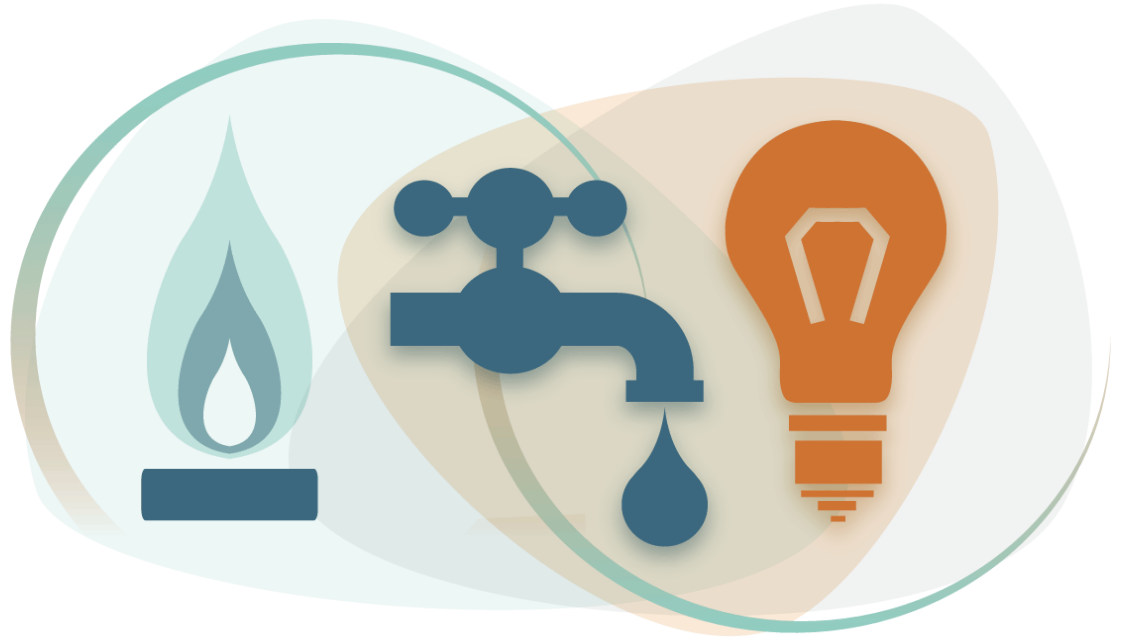
Line 2

All
New
Critical
Pending

Maintenance - New By Ramesh Patel <small>🕒 05/01/2020 18:56</small>	🕒 00:05:24 Acknowledge ✔
Store - New By Ramesh Patel <small>🕒 05/01/2020 18:56</small>	🕒 00:05:24 Acknowledge ✔
Quality - Critical Escalation By Ramesh Patel <small>🕒 01/01/2020 10:05</small>	🕒 2 Days, 09:04:23 Acknowledged Dinesh Jain
Material Shortage - Pending By Ramesh Patel <small>🕒 05/01/2020 14:25</small>	🕒 04:04:55 Acknowledged Dinesh Jain
Quality - Pending By Ramesh Patel <small>🕒 04/01/2020 14:25</small>	🕒 1 Days, 04:04:55 Acknowledged Dinesh Jain
Store - Pending By Ramesh Patel <small>🕒 03/01/2020 14:25</small>	🕒 2 Days, 04:04:55 Acknowledged Dinesh Jain
Maintenance - Pending By Ramesh Patel <small>🕒 02/01/2020 14:25</small>	🕒 3 Days, 04:04:55 Acknowledged Dinesh Jain
Quality - Pending By Ramesh Patel <small>🕒 02/01/2020 14:25</small>	🕒 3 Days, 04:04:55 Acknowledged Dinesh Jain

Effy's Dashboard



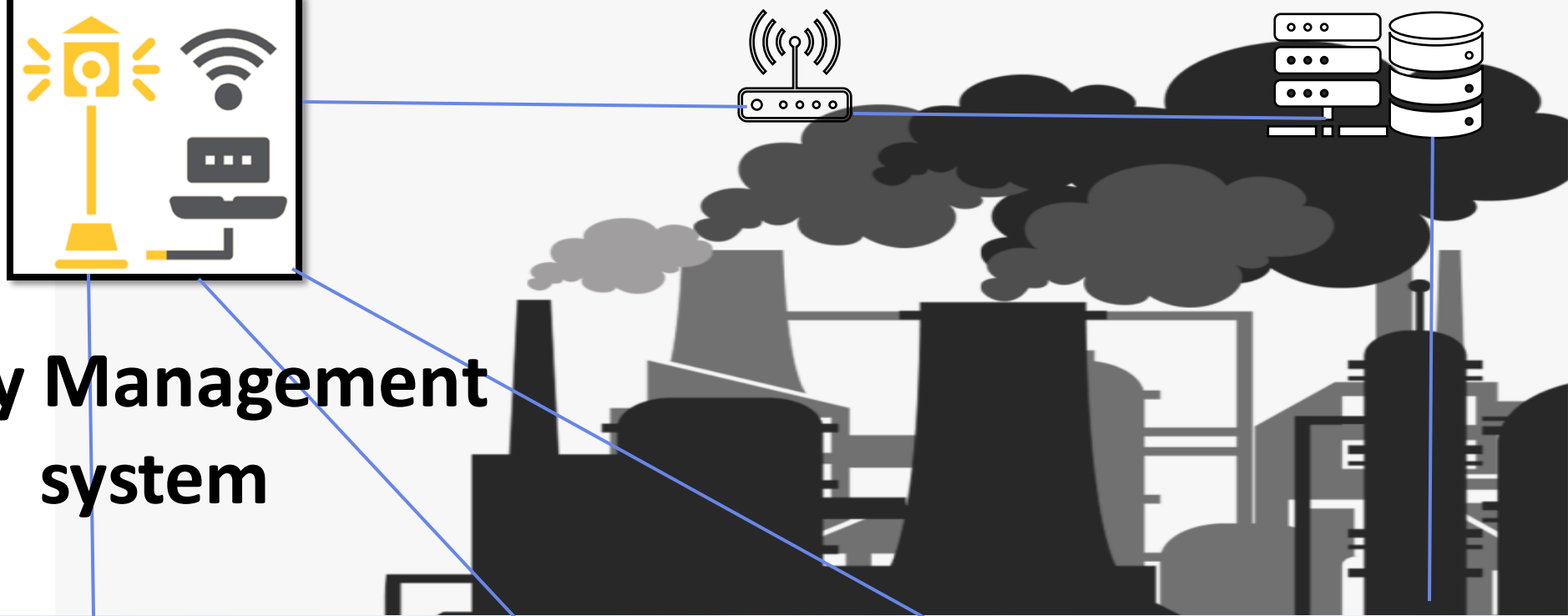


GAS

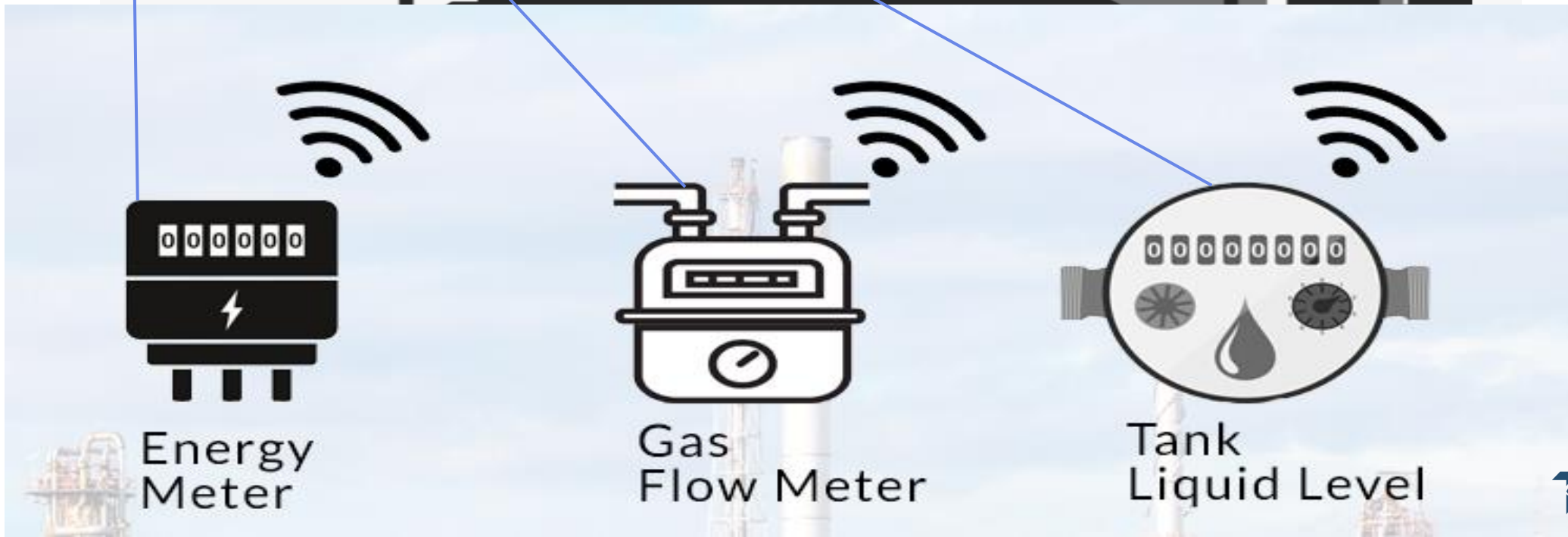
ELECTRICITY

WATER

Utility Management System



Utility Management system



Effy's Dashboard

Welcome, Admin!

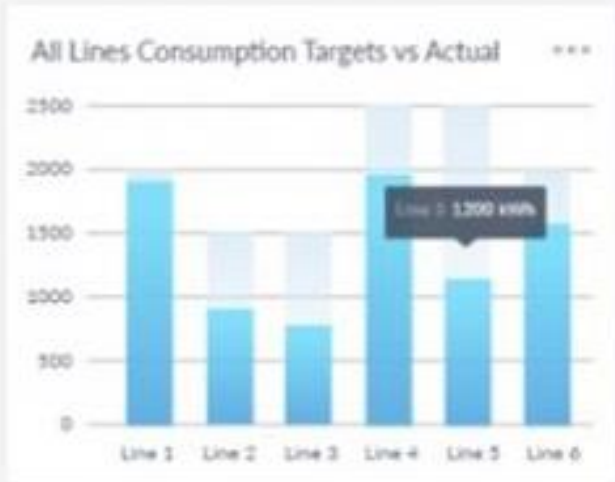
DUS | EMS

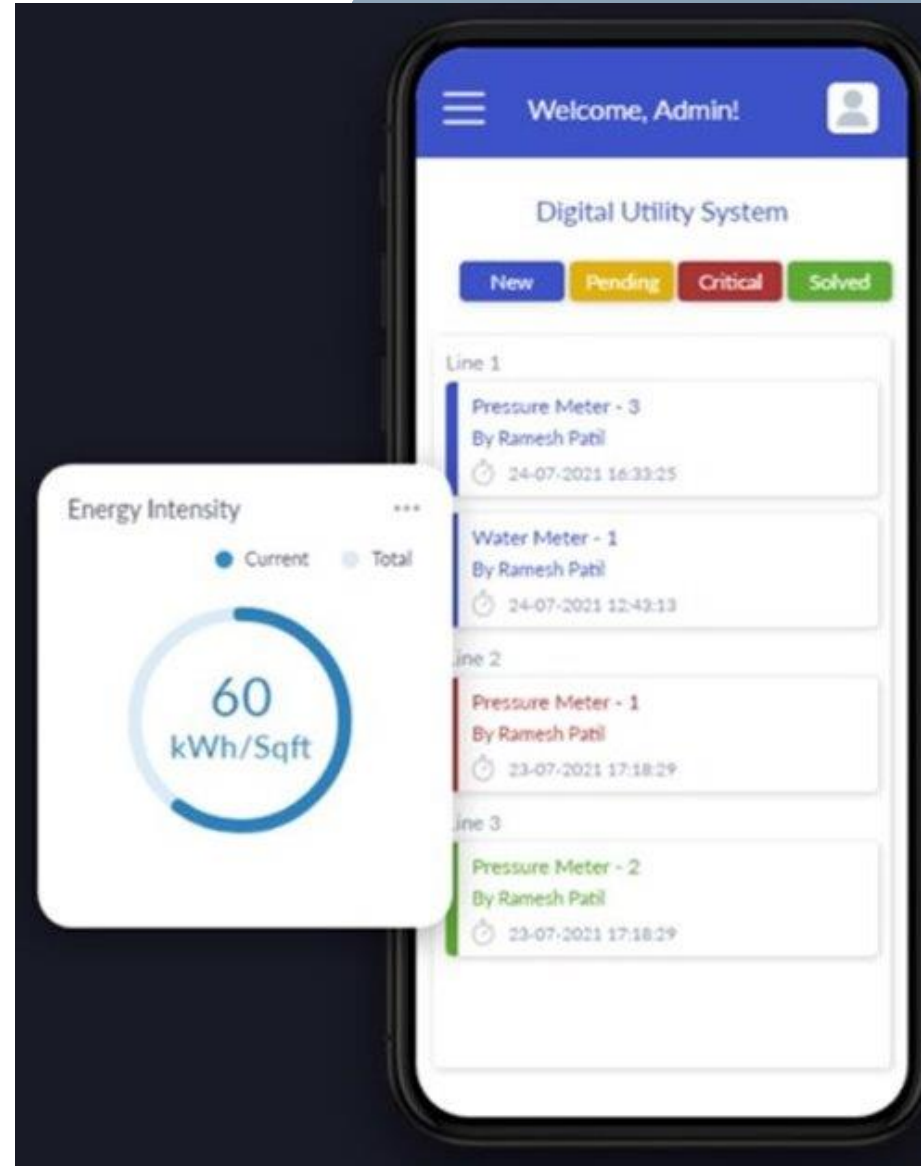
- Dashboard
- About Us
- Log Out

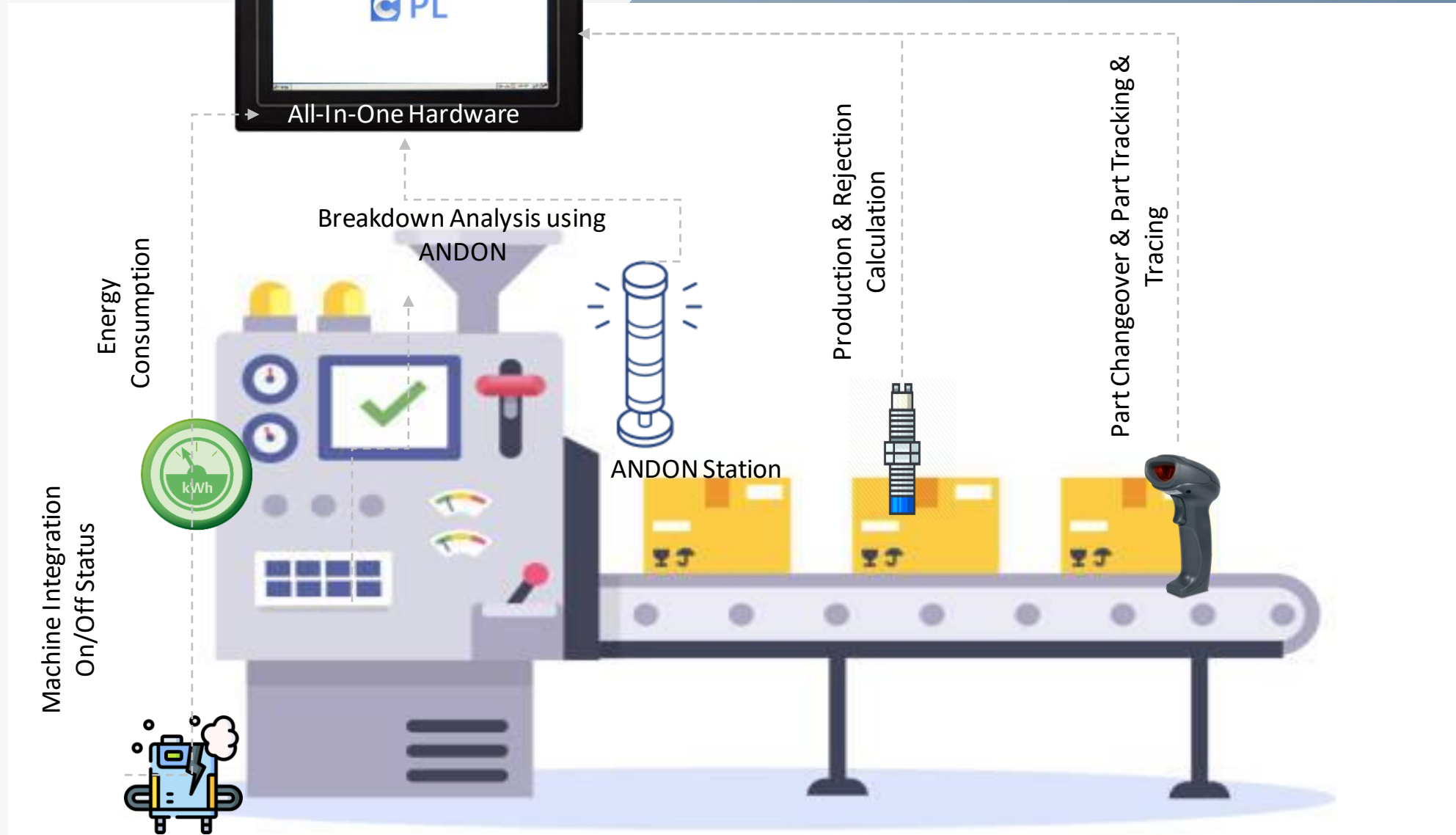
Effy

Digital Utility System

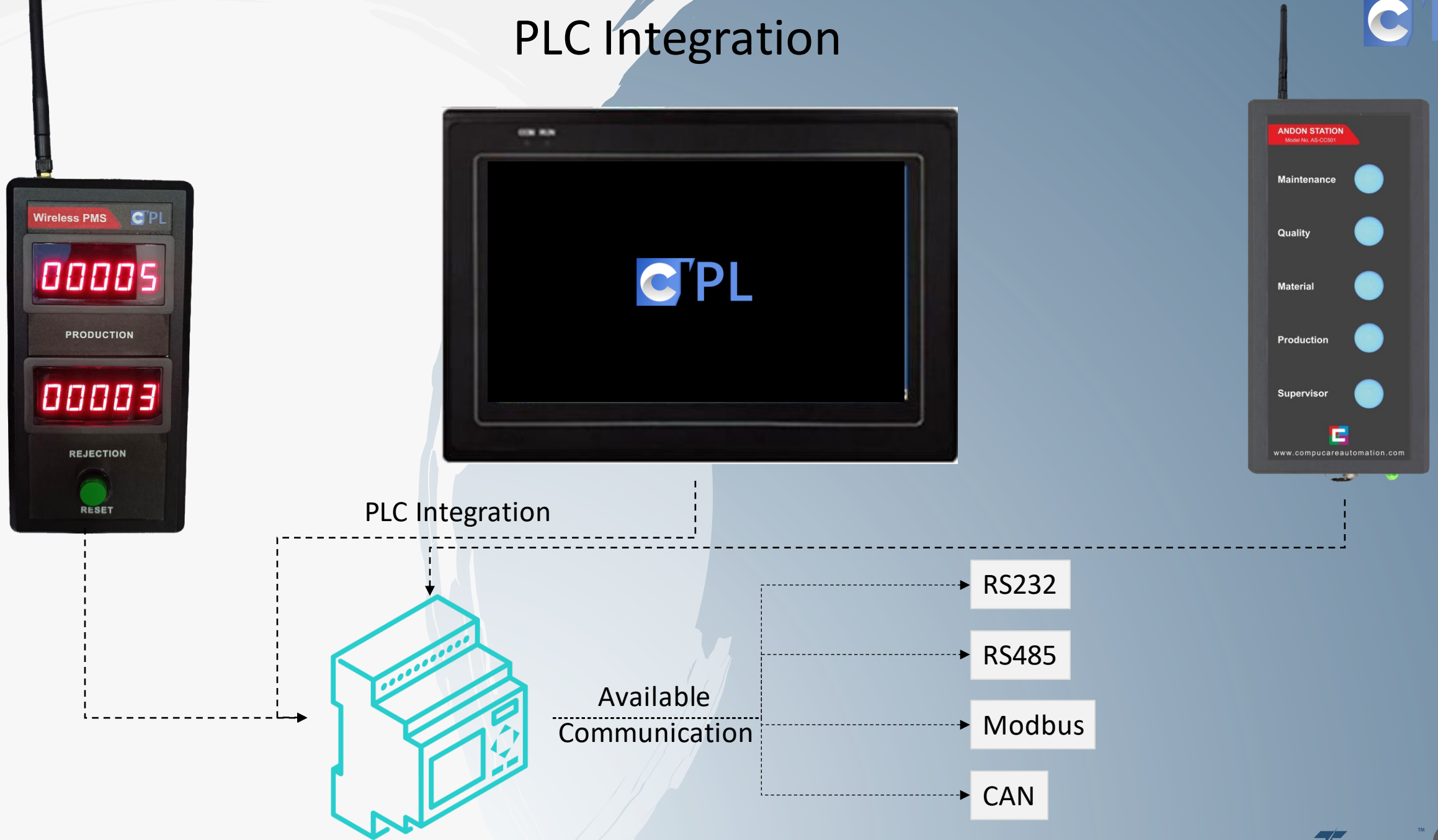
Dashboard | Data Sheet







PLC Integration



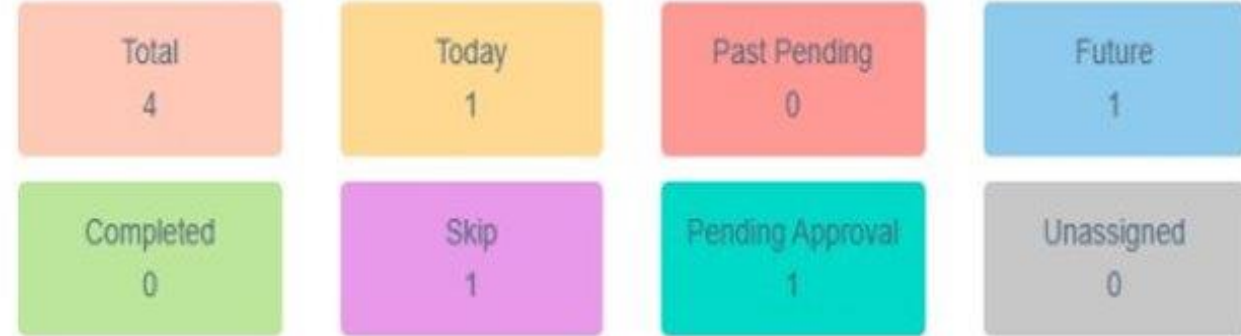
Preventive Maintenance Management

Preventive Maintenance



< >
JANUARY 2020
Month Week Day

SUN	MON	TUE	WED	THU	FRI	SAT
29	30	31	1 CHECK & DO	2	3 CHK & DO CC	4
5	6	7	8	9 CHK & DO GE	10	11
12	13	14	15	16 CHK & DO CC	17	18
19	20	21	22	23	24	25
26	27	28	29	30	31	1
2	3	4	5	6	7	8



Bar chart Pie Chart



- Total Activity
- Today Activity
- Past Pending Activity
- Future Activity
- Completed Activity
- Skip Activity
- Pending Approval Activity
- Unassigned Activity

Legend :
● Completed
 ● Past Pending
 ● Future
 ● Skip
 ● Today
 ● No Operator Assign
 ● Pending Approval
 ● Skip Approval

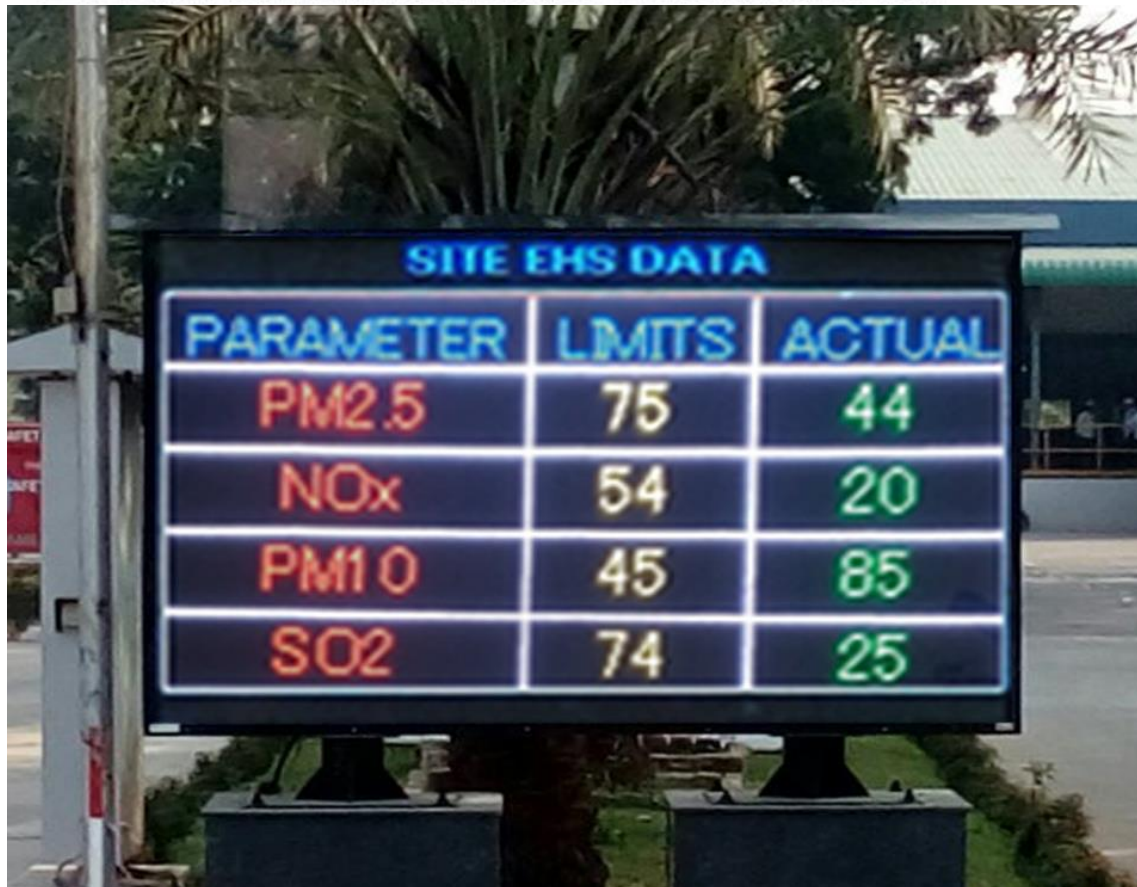
State - of - the - Art Industrial displays
designed and manufactured by

LUMI

[Get A Demo →](#)

L7UMI

Environmental Health &



A photograph of a physical LED display board titled "SITE EHS DATA". The board shows a table with three columns: PARAMETER, LIMITS, and ACTUAL. The data is as follows:

PARAMETER	LIMITS	ACTUAL
PM2.5	75	44
NOx	54	20
PM10	45	85
SO2	74	25



A photograph of a physical LED display board titled "DAILY ENVIRONMENTAL PERFORMANCE". The board shows the date and time, followed by a table with three columns: Parameter, Limit, and Result. The data is as follows:

19/07/2021 12:30

Parameter	Limit	Result
PH	6.5-8.5	7.36
COD	100mg/l	82
BOD	30mg/l	25
TDS	2100mg/l	1412
SS	100mg/l	33

L7UMI

Emergency Response Team



LYUMI

Accidental Display



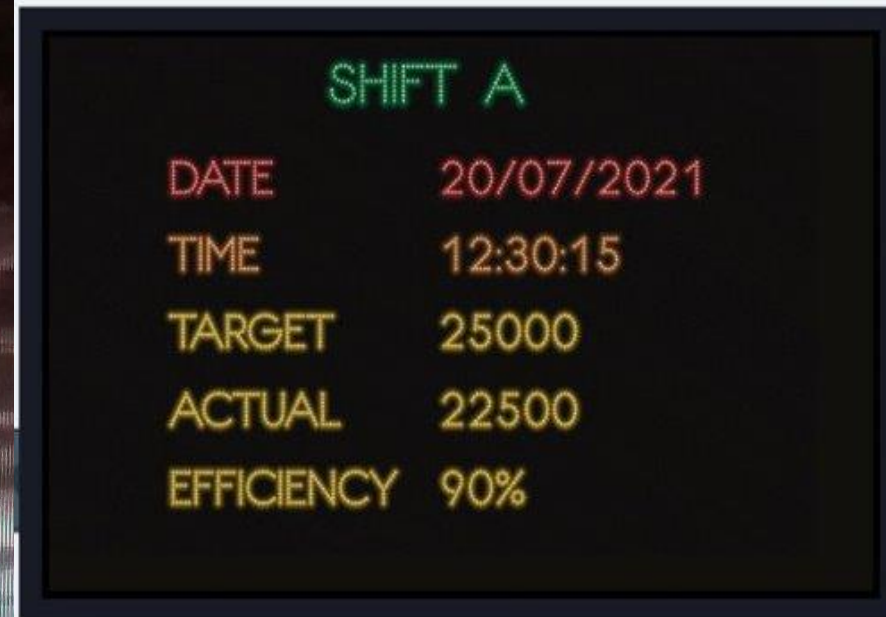
LYUMI

Production Display



A digital production display for RAV518HUD. The display shows the following data in red and yellow text on a black background:

RAV518HUD	
TARGET	870
PLAN	626
ACTUAL	423
%EFF	68



A digital production display for Shift A. The display shows the following data in green and yellow text on a black background:

SHIFT A	
DATE	20/07/2021
TIME	12:30:15
TARGET	25000
ACTUAL	22500
EFFICIENCY	90%

LYUMI

Industrial Digital Clock



Synchronized Time System



Immaculate Visibility



Operational Consistency



Other Products:

**Work Instruction
Digitization**

**Poka-Yoke System
(Mistake proofing)**

Tact Time Solution

**Head Count
Solution**

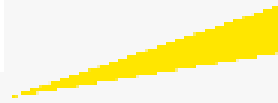
**RFID Based Assets
Management**

Pick To Light

**Boom
barrier/Parking
management**

**Tripod Turnstile
solution**

Our Clients





Thank You!

Compucare India Prv. Ltd.

Bombay Shopping Centre, 203, RC Dutt Rd, Racecourse, Vadiwadi, Vadodara, Gujarat
390007

Website : www.compucareindia.com