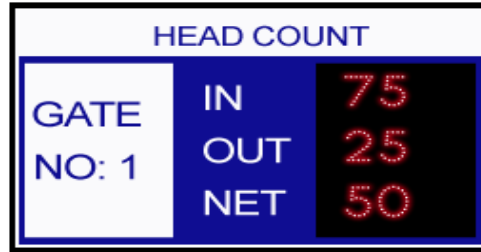
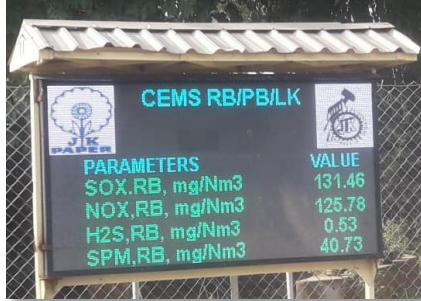


Industrial Integrated Display Solutions & Factory Visualization

Display Solutions



Environment Health & Safety Display

Old

New

THE SUPREME INDUSTRIES LTD. A09-2022
 UNIT NO-II GADEGAN PIN-425114
 MAHARASHTRA POLLUTION CONTROL BOARD - CONSENT TO OPERATE - NO-MPCB/2020/2022

A.3 THE CONSENT IS VALID FOR THE MANUFACTURING OF: Maximum Quantity 2,4,000 TMT PA

B.1 EFFLUENT DISCHARGE DETAILS

Sr No.	Type	Quantity	Unit	Disposal Method
1	Trade Effluent	15.00	M ³	17 Cur/1
2	Seepage Effluent	15.00	M ³	Treatment by STP & STP and Reused Near/for Landfilling/33

C.1 TRADE EFFLUENT DETAILS

Sr No.	Parameters	Limit	Present Limit	Unit
1	SS	300	250	mg/l
2	Oil & Grease	5.0	5.0	mg/l
3	PH	6.5 to 9	7.5	mg/l
4	Chloride	500	500	mg/l
5	Ammonia Nitrogen	1.5	1.5	mg/l
6	Nitrate Nitrogen	45	45	mg/l
7	Calcium	1000	1000	mg/l
8	Magnesium	1000	1000	mg/l
9	Total Hardness	1000	1000	mg/l
10	Total Dissolved Solids	1000	1000	mg/l
11	Total Suspended Solids	1000	1000	mg/l
12	Conductivity	1000	1000	mg/l

D.1 SEWAGE EFFLUENT DETAILS

Sr No.	Parameters	Limit	Present Limit	Unit
1	Suspended Solids	50	50	mg/l
2	BOD	300	300	mg/l

E.1 NON HAZARDOUS SOLID WASTE

Sr No.	Type	Quantity	Unit	Present Quantity	Unit
1	Canteen Waste	20	MT/M	15.00	Kg/18
2	Office Waste	20	MT/M	15.00	Kg/18
3	Parking Waste	20	MT/M	15.00	MT/M

F.1 DAILY WATER CONSUMPTION

Sr No.	Type	Quantity	Unit
1	Domestic	15.00	CFD
2	Industrial Processing	15.00	CFD
3	Industrial Cooling	15.00	MT

G.1 AIR EMISSION CONTROL

Sr No.	Dg Set (KVA)	150 Kw/3 No	225 Kw	Grades & Pulveriser	Auto Mixer-1	Auto Mixer-2	1000 KVA
1	Stack Height	55	55	64	145	145	5
2	TSM Limit	150	150	150	150	150	150
3	Present Limit	5.0	5.0	5.0	5.0	5.0	Off
4	Unit	mg/Nm3	mg/Nm3	mg/Nm3	mg/Nm3	mg/Nm3	mg/Nm3

H.1 HAZARDOUS WASTE DETAILS

Sr No.	Category	Type of Waste	Qty	Unit	Disposal	Disposal Qty	Unit
1	5.1	Used / Spent Oil	6	MT/Y	By Sale to Authorized Reprocessor	6	MT/Y
2	5.2	Oil Soaked Cotton and contaminated	4	MT/Y	By Sale to Authorized Reprocessor	4	MT/Y
3	8.1	Lead Acid Battery	25	No./Y	Sent back to manufacture or by sale to Authorized Reprocessor	25	No./Y
4	33.3	Discarded containers / Barrels Barely contaminated with hazardous waste chemical etc.	12	MT/Y	Disposed to CHWTSDE	12	MT/Y
5	33.3	Discarded containers / Barrels Barely contaminated with hazardous waste chemical etc.	-	MT/Y	Disposed to CHWTSDE	-	MT/Y
6	33.3	Waste/Sludge	-	MT/Y	Disposed to CHWTSDE	-	MT/Y
7	33.3	E Waste	-	MT/Y	Authorized Reprocessor	24	kg

VS.





Environmental Data

1. Ambient Air Quality Data
2. Waste Water Data
3. Stack Emission Data...etc



Factory



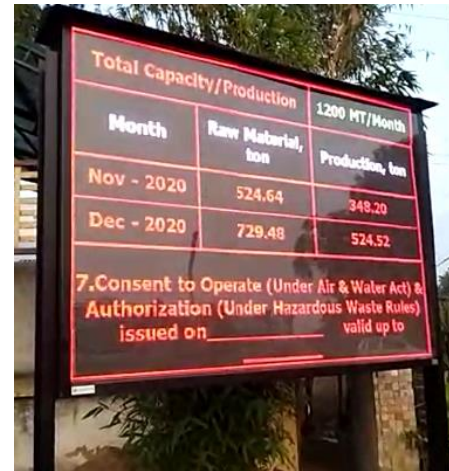
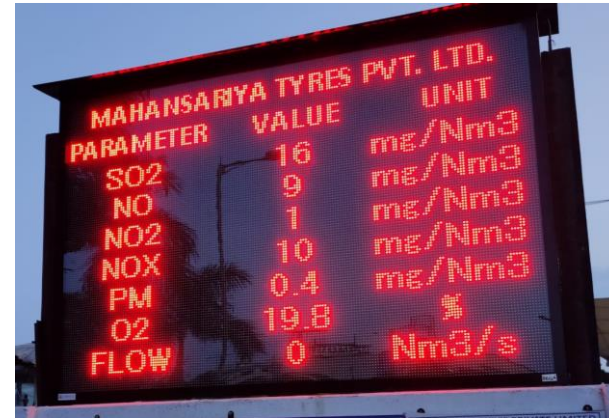
EHS Data Server

Data Upload using internet on
CPCB website

Data Upload using intranet on
Factory Main Gate Display Board

Factory Main Gate









Safety Statistics Display

Old

New



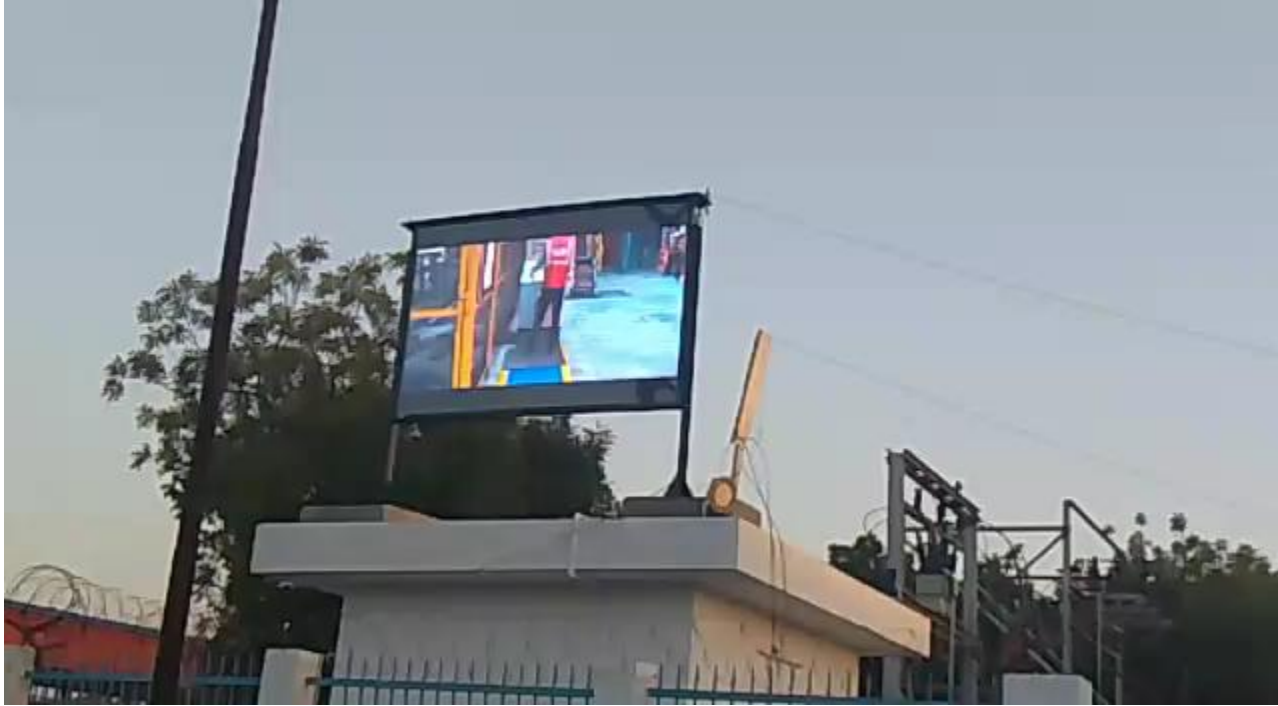
VS.



On-Site Installed Displays







Emergency Response Team Display

Old

FIRST AID TEAM					
Sr.No.	Name & Mobile No.	Member	Photo	IN	OUT
01	ASHOK PANDIT - 9866778820			IN	
02	SHAH SURANA - 8866778820				OUT
03				IN	
04				IN	
05				IN	
06				IN	
07	STEVEN ROX - 7783778820				OUT
08					OUT
09				IN	
10					OUT
11				IN	
12					OUT
13				IN	
14				IN	
15				IN	
16					OUT
17				IN	
18				IN	

New

YOKOHAMA INDIA		
27/12/2021		09:01
First Aiders		
EmpCode	EmpName	DeptName
YIN14304	Ashish Kumar Hans	Material
YIN14418	Sandeep Kumar	Warehouse
YIN16589	Rajib Lochan	Curing &
YIN16592	Acharya	Finishing
YIN16613	Nitin Vaidya	Material
YIN17670	Vineet Singh	Material
YIN18743	Prashant Pandey	Curing &
YIN18777	Raghvendra Pratap	Finishing
YIN19794	Singh	MES

VS.

Technical Diagram



TA MACHINE



SERVER

INDOFIL INDUSTRIES LIMITED - DAHEJ
ATTENDANCE OF ERT AND FIRST AID MEMBERS

EMERGENCY PHONE 210/235 INCIDENT CONTROLLER Malhar Giri
EMERGENCY ANNOUNCEMENT NO. 7510 SHIFT 1ST DATE 27/02/2019

EMERGENCY RESPONSE TEAM MEMBERS PRESENT				FIRST AID TEAM MEMBERS PRESENT			
Emp. No.	Name	Dept.	Ext.	Emp. No.	Name	Dept.	Ext.
1234	Mehul Rajyaguru	PRO.	123	1234	Mehul Rajyaguru	PRO.	123
12345	Shailesh Goswami	Elec.	874	12345	Shailesh Goswami	Elec.	874
2	Rohit Machhi	Pro.	321	2	Rohit Machhi	Pro.	321
213	Malhar Giri	Pro.	874	213	Malhar Giri	Pro.	874
217	Vicky Patel	Pro.	587	217	Vicky Patel	Pro.	587
2222	Akshay Rana	Elec.	478	2222	Akshay Rana	Elec.	478
28	Akshay Patel	Pro.	845	28	Akshay Patel	Pro.	845
3211	Dharmesh Patel	It	952	3211	Dharmesh Patel	It	952
3333	Shivdipsinh Zala	Pro.	333	3333	Shivdipsinh Zala	Pro.	333
4444	Sanjay Kapoor	It	527	4444	Sanjay Kapoor	It	527
5	Komal Shah	Elec.	324	5	Komal Shah	Elec.	324
7098	Nakul Dabit	Mar.	888	7098	Nakul Dabit	Mar.	888

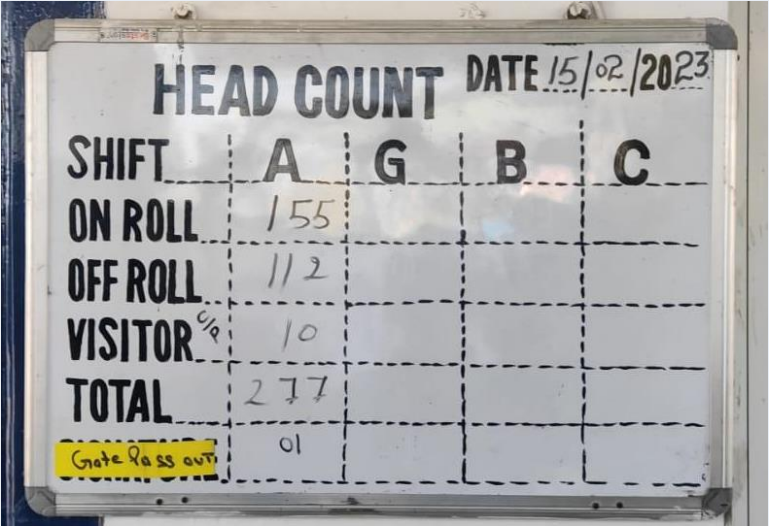


TCP/IP

EMERGENCY RESPONSE TEAM MEMBER				
Name	Photo	Dept.	Mobile No.	First Aider/ Fire Fighter
Anoop Kum ar Vind		Security	9284854581	First Aider
Arijit Patra		Motor	9681759771	Fire Fighter
Ashok Shinde		EHS	9960205843	First Aider

Headcount

Old




A handwritten headcount board with a grid. The title is 'HEAD COUNT' and the date is '15/02/2023'. The grid has columns for shifts A, G, B, and C, and rows for 'ON ROLL', 'OFF ROLL', 'VISITOR', and 'TOTAL'. A yellow sticker at the bottom left says 'Gate Pass out' with the number '01' written next to it.

SHIFT	A	G	B	C
ON ROLL	155			
OFF ROLL	112			
VISITOR ^{CP}	10			
TOTAL	277			
Gate Pass out	01			

vs.

New



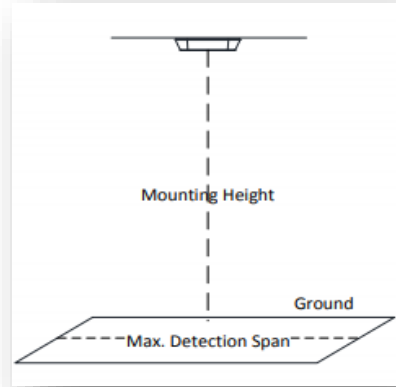
An LED display board showing headcount data in red. The date and time are '21.10.2022 16:26:17'. The categories and counts are: Visitor 045, Employee 070, Contractor 050, Driver 025, and Total Head Count 150.

Category	Count
21.10.2022 16:26:17	
Visitor	045
Employee	070
Contractor	050
Driver	025
Total Head Count	150

Head Count Single Door



Bi-Directional
Vision Counter



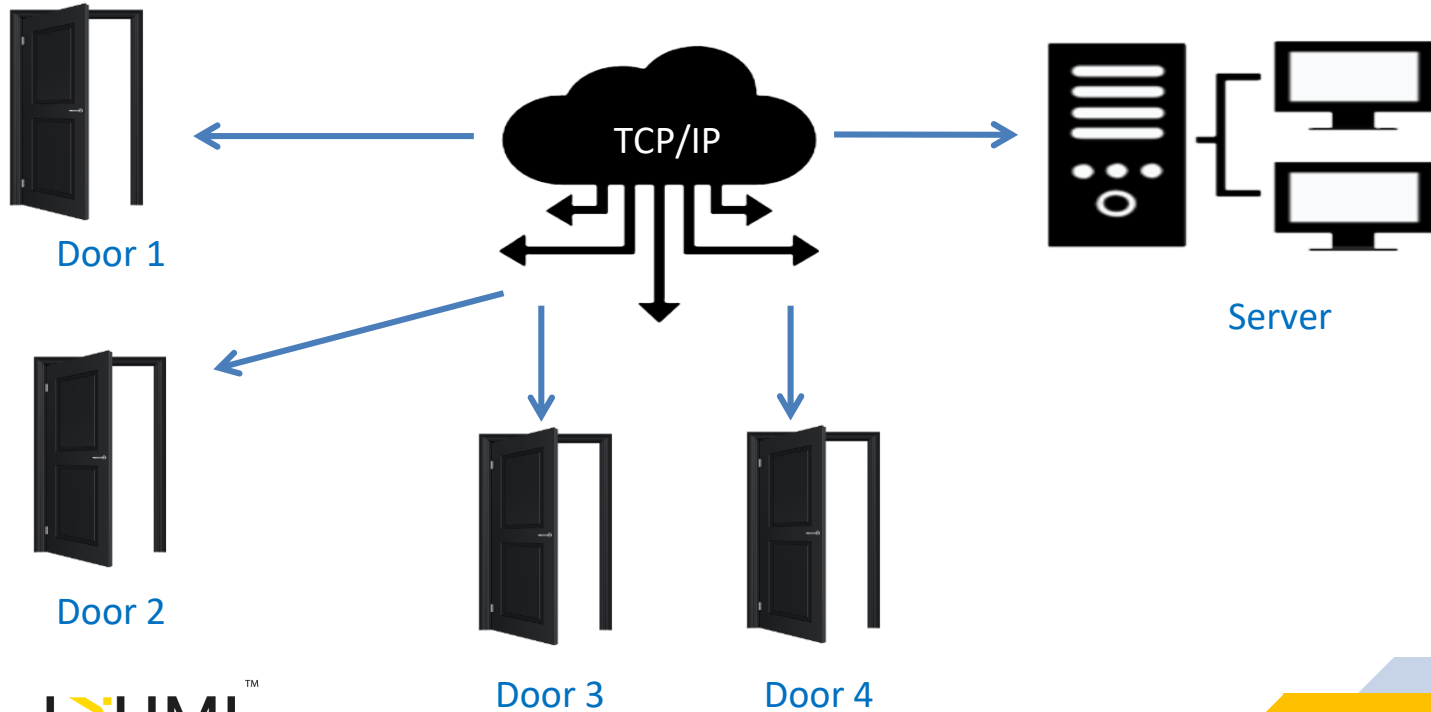
Server

HEAD COUNT		
GATE NO: 1	IN	75
	OUT	25
	NET	50

Real – Time Head count Display



Head Count Multi Door



Head Count Single Door/Multi-door

Integration with
attendance data base



Headcount
Application



Real – Time Head
Count Display

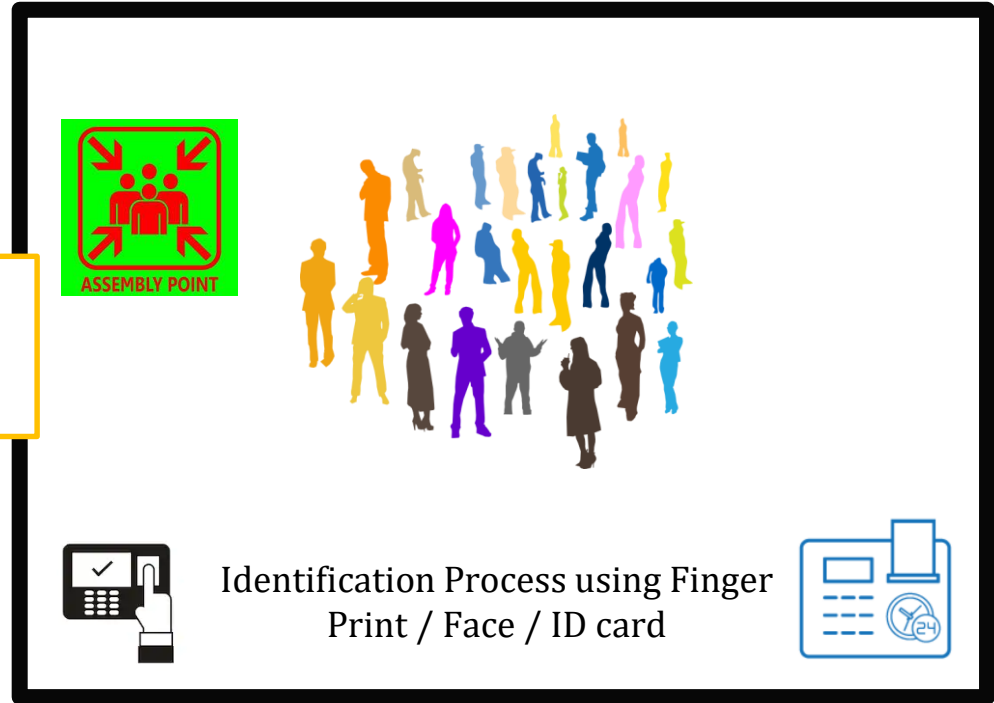


EMPLOYEES	0600
VISITORS	200
CONTRACTORS	0400
OTHERS	0000

2.5 FEET WIDTH X 1.6 FEET HEIGHT

Counting at One Assembly Point

Counting Process



Counting at Multiple Assembly Points

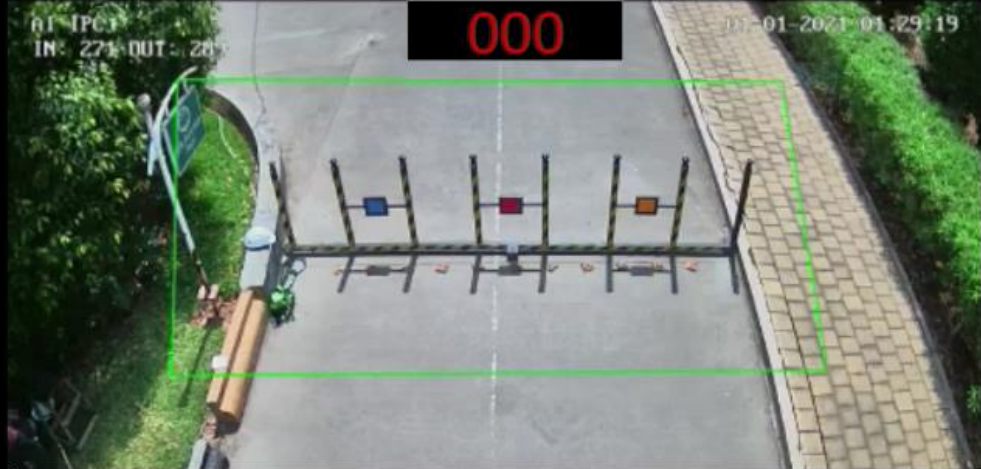
ASSEMBLY POINT		
TOTAL IN	IDENTIFIED	UNIDENTIFIED
3300	2300	1000



ASSEMBLY POINT - 3	
IN	REMAINING
1000	200

ASSEMBLY POINT - 1	
IN	REMAINING
900	200

ASSEMBLY POINT - 2	
IN	REMAINING
1400	200



CompuCare Head Counting System



LYUMI™

Synchronised Digital Clock



- Format: HH:MM/HH:MM:SS/Other
- Connectivity: Wi-Fi/Ethernet
- Size
- Full / Single Color
- Visibility



Digital Clock




Digital Clock




Production Display Boards


Actual Count Integration Method




Proximity Sensor



24 VDC/12VDC



Direct From PLC



Potential Free Contact

PLANT PERFORMANCE

	DATE	MONTH	YEAR
	21.08.2020	August	FY20-
PRODUCTION (MT)			
AMMONIA	1801.8	36002.2	248654.5
UREA	2984.07	60050.63	418566.45
SPECIFIC ENERGY CONSUMPTION (GCal/MT)			
AMMONIA	7.75	7.73	7.77
UREA	5.47	5.44	5.46
ENERGY COST (Rs./GCal)			2400
rgy. Save Environment. Save Earth Save E			

05.02 SHIFT TOWER 15.14

#	PLAN	ACTUAL	GAP
A	1100	324	-776
B	1150	311	-839
C	300	23	-277
D	300	81	-219
E	300	0	-300
			-228

61120 / 170
PLAN UPPER RH / LH

DATE	27.08.2018			
TIME	19:04:58			
INPUT DATA	A			
TARGET	12000			
PLAN	5600			
ACTUAL	480			
VARIANCE	5100			
HR1	HR2	HR3	HR4	
111	222	333	444	
555	666	777	888	
HR5	HR6	HR7	HR8	

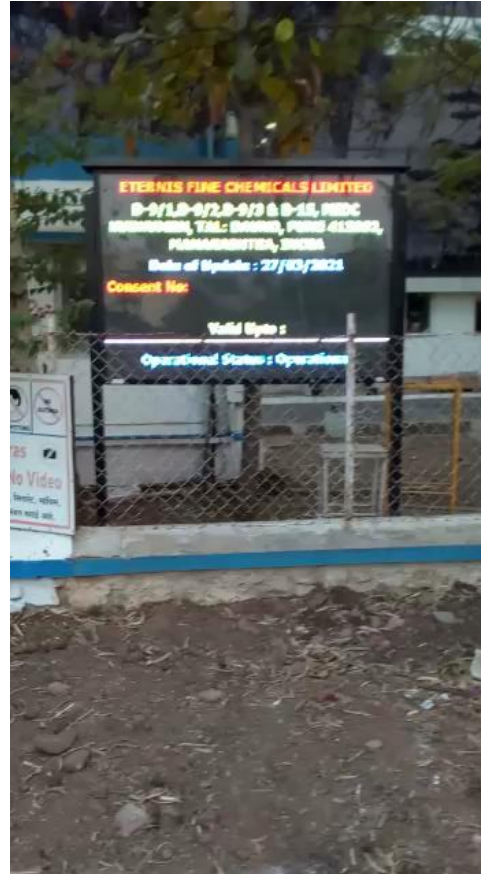
WEEKLY TARGET	14076
WEEKLY ACTUAL	4094
PRODUCT TARGET RATE	120
PRODUCT ACTUAL RATE	138
PRODUCT LINE EFFICIENCY	115

TARGET	1500
ACTUAL	1300
DIFFERENCE	200
IDEAL TIME	3:30
EFFICIENCY	80%

General Display Boards



General Display Boards



GE Power

Industry Type: Energy

No. Of Employees: 100+

Locations: Sanand



GE Power India Limited

Case Study





GE Power India Limited

Case Study

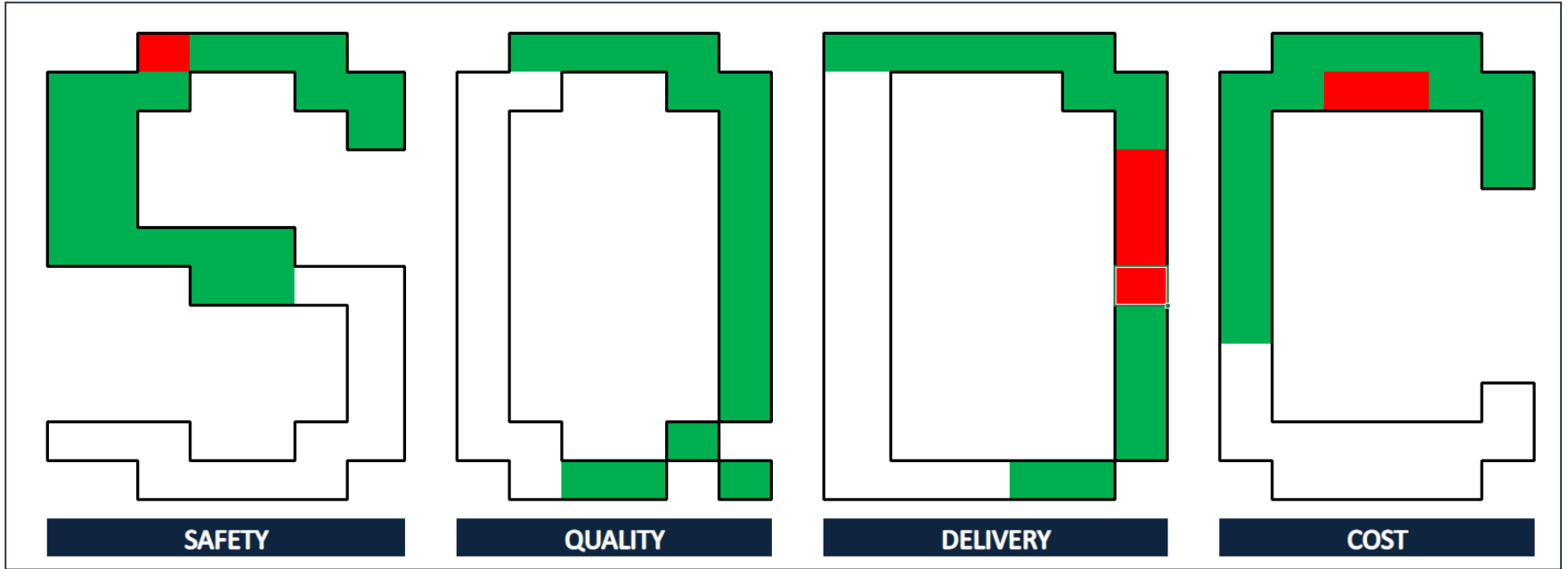
Objective:

To have a visual notification of department KPIs – along with safety incidents – so as to have a meaningful analysis of the events.

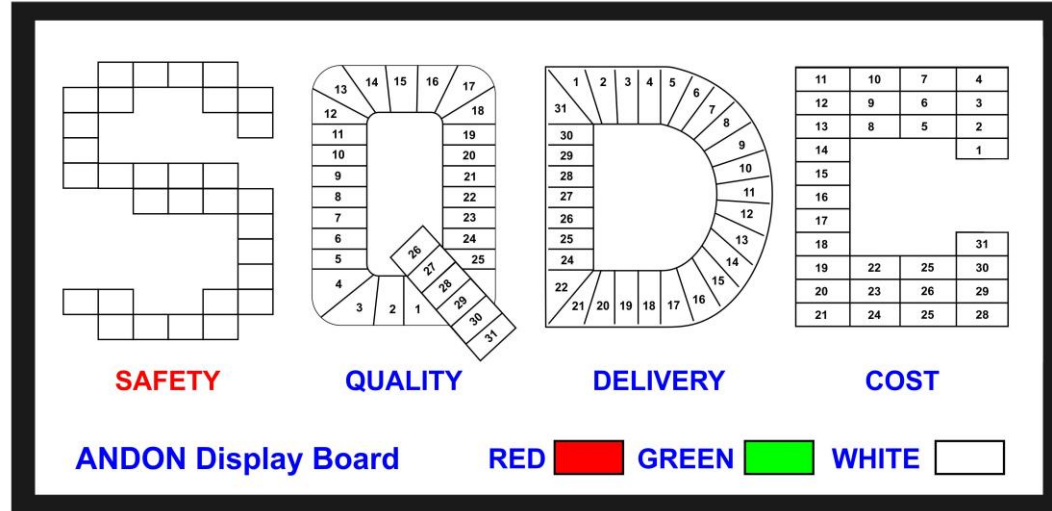
Solution:

We developed a logic for showing the complete KPI parameters on a single screen, by using Red/Green colour LEDs and screen flip facility. Customer then extended the logic to other departments also and in totality, we were able to show the relevant details for seven departments.

Project initiation

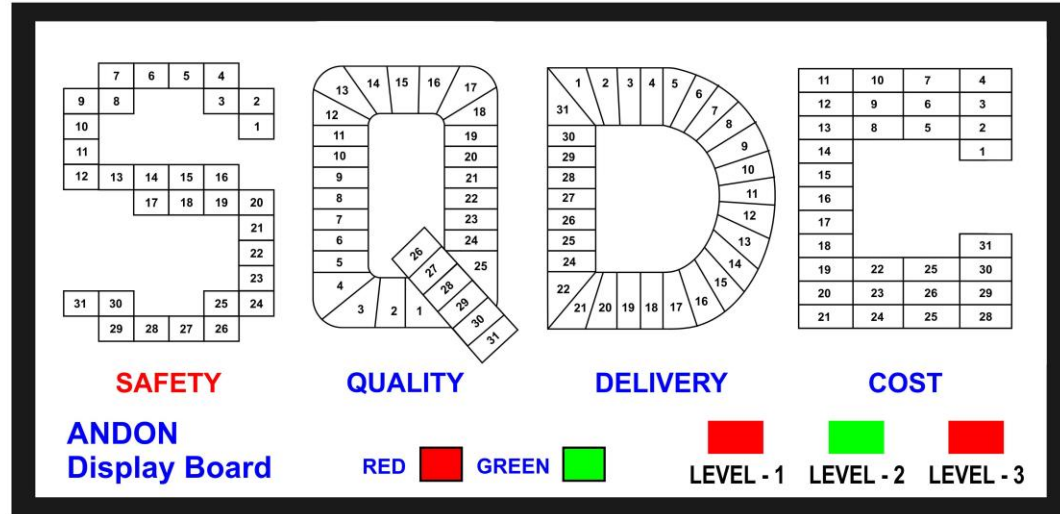


Project Development



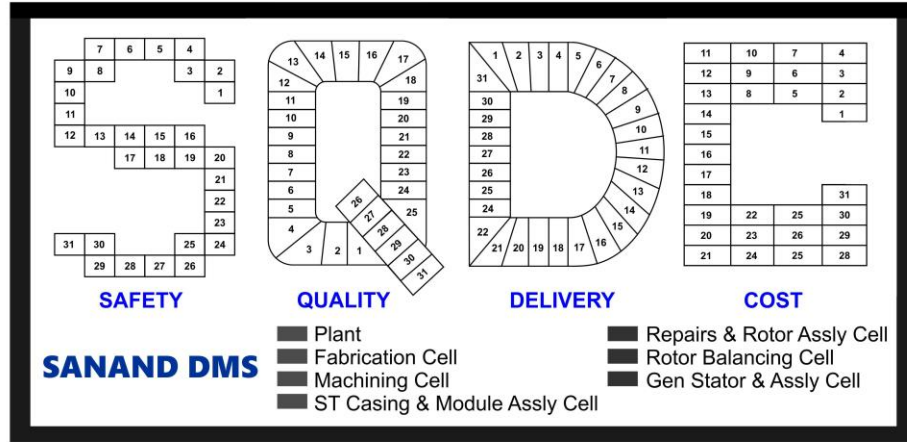
8.5 FEET WIDTH X 4 FEET HEIGHT

Project Development



8.5 FEET WIDTH X 4 FEET HEIGHT

Project Closer



8.5 FEET WIDTH X 4 FEET HEIGHT

Project Closure



Case Study

Elkem South Asia

Industry Type: Ceramics

No. Of Employees: 400+

Locations: Lotus Estate, Navi Mumbai



Objective:

- To get real-time people count data
- To get real-time data of people who have reported at assembly point
- To identify the missing people quickly so that emergency evacuation efforts can be aligned properly

Solution:

- Integration with their existing attendance database so as to get real-time punching data in our application
- Biometric machines installed at main gate & assembly points so as to get pre-emergency attendance data and real-time assembly point data
- System will generate a report of people missing at assembly point after 5 minutes of getting first punch for assembly area machine so that further actions can be planned for evacuation



Our Clients



Logos used above belong to its respective owner

Our Clients



Logos used above belong to its respective owner

Our Client Testimonials



Lanxess

Mr. Vishal Chaudhari

I would like to appreciate service of Compucare, we faced an issue in their product and within a span of one day they resolved it. Compucare's service and support is remarkable and also the product is serving its purpose. It was a nice experience working with the company and would expect the same in future business.



Asian Paints

Mr. Himanshu Shekhar

"The custom made EHS display board removed manual boards and promoted digitization along with achieving legal compliance. We have faced no issues so far and are very satisfied with the overall product and service"



Coastal Gujarat Pvt Ltd

Mr. Tejas Khadse

"We have used Compucare's product in the past too and have become our one stop for any LED board or industrial automation requirement. The aesthetic look of EHS display board is appealing for everyone visiting the facility."

MTPL

Mahansaria Tyres Pvt Ltd

Mr. Digvijaysinh Thakore

"Compucare is the great company to work with. They have great after sales service and are always available in case of any issue. We are very much satisfied with the overall experience."



Abbott

Mr. Akshit Kakran

"The digital Environmental, Health and Safety display saves management time and communicates the EHS data visually. Also, if any auditor or visitor arrives it showcases the culture of the company in a digital way. "



Feel free to ask any questions

Contact Us At:



inquiry@compucareindia.com



sharad.r@compucareindia.com



+91-9558812824 | +91-9898090830



+91-8128691450





Thank You

